


DILLON STADIUM RENOVATION

DILLON STADIUM
HARTFORD, CONNECTICUT
MARCH 28TH, 2018

SITE ANALYSIS

Existing

- 1 Demolish Existing Stand
- 2 Keep Existing Lighting
- 3 Demolish Existing Field
- 4 Renovate Existing (Demolishing TBD)
- 5 Demolish Existing Stands
- 6 Renovate Existing Structure
-  Existing Lighting

Existing

A	N Building 1	2,960 SF
B	NE Building 2	646 SF
C	SE Building 3	1,363 SF
D	SW Building 4	1,042 SF
	TOTAL	6,011 SF

Existing Light Poles



SITE PLAN

Existing

- 1 N Building 1
- 2 NE Building 2
- 3 SE Building 3
- 4 SW Building 4
- TOTAL

New

- 5 New Restrooms
- 6 New Concessions (Propose use of carts)
- 7 New Ticketing / Team Store
- 8 New West Building

First Floor

Conditioned Space

4,230 SF

Unconditioned Space

13,654 SF

Second Floor

Partially Covered

1,840 SF

Conditioned

1,394 SF

Circulation

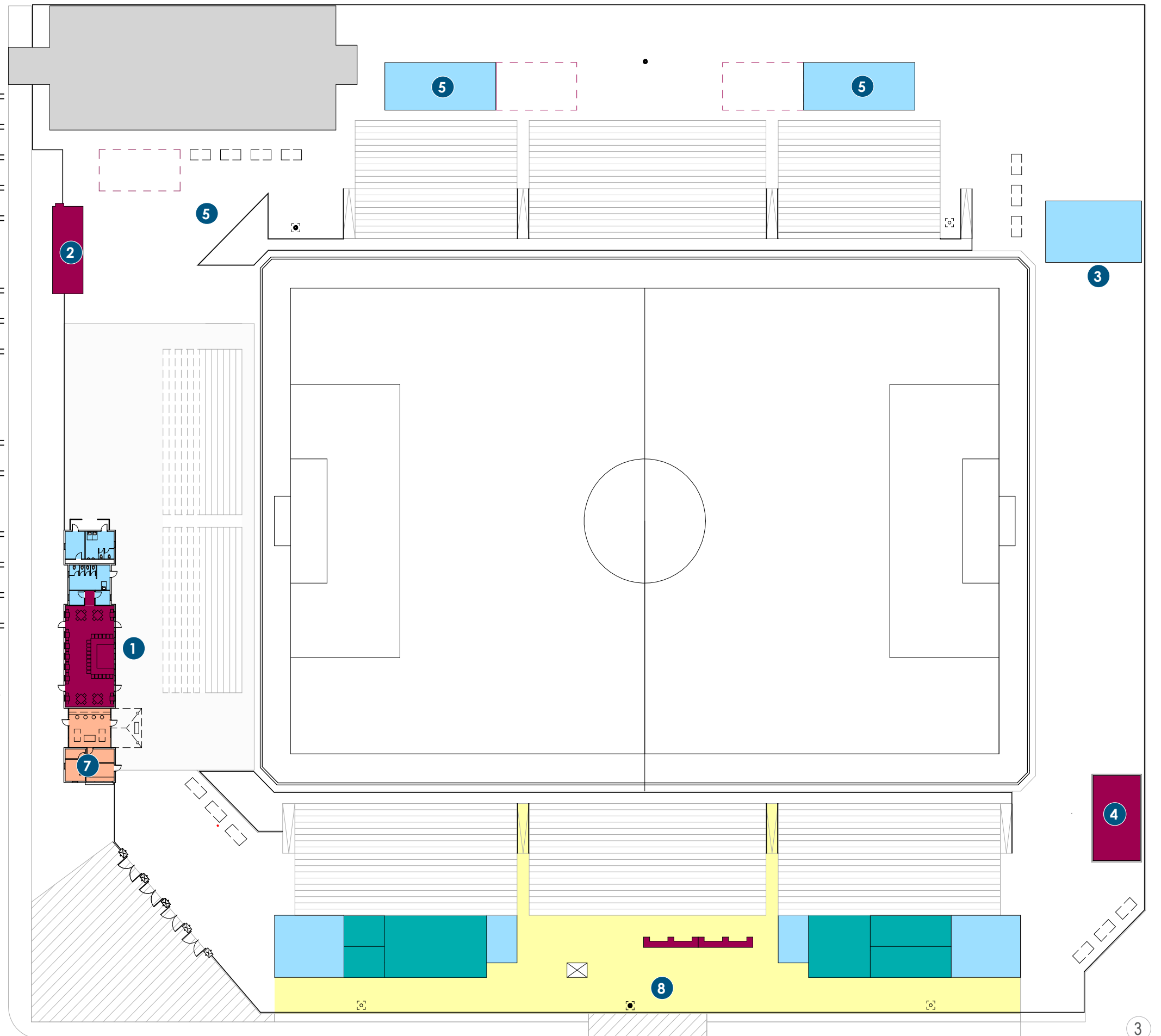
14,446 SF

Total West Building

35,564 SF

TOTAL NEW / EXISTING

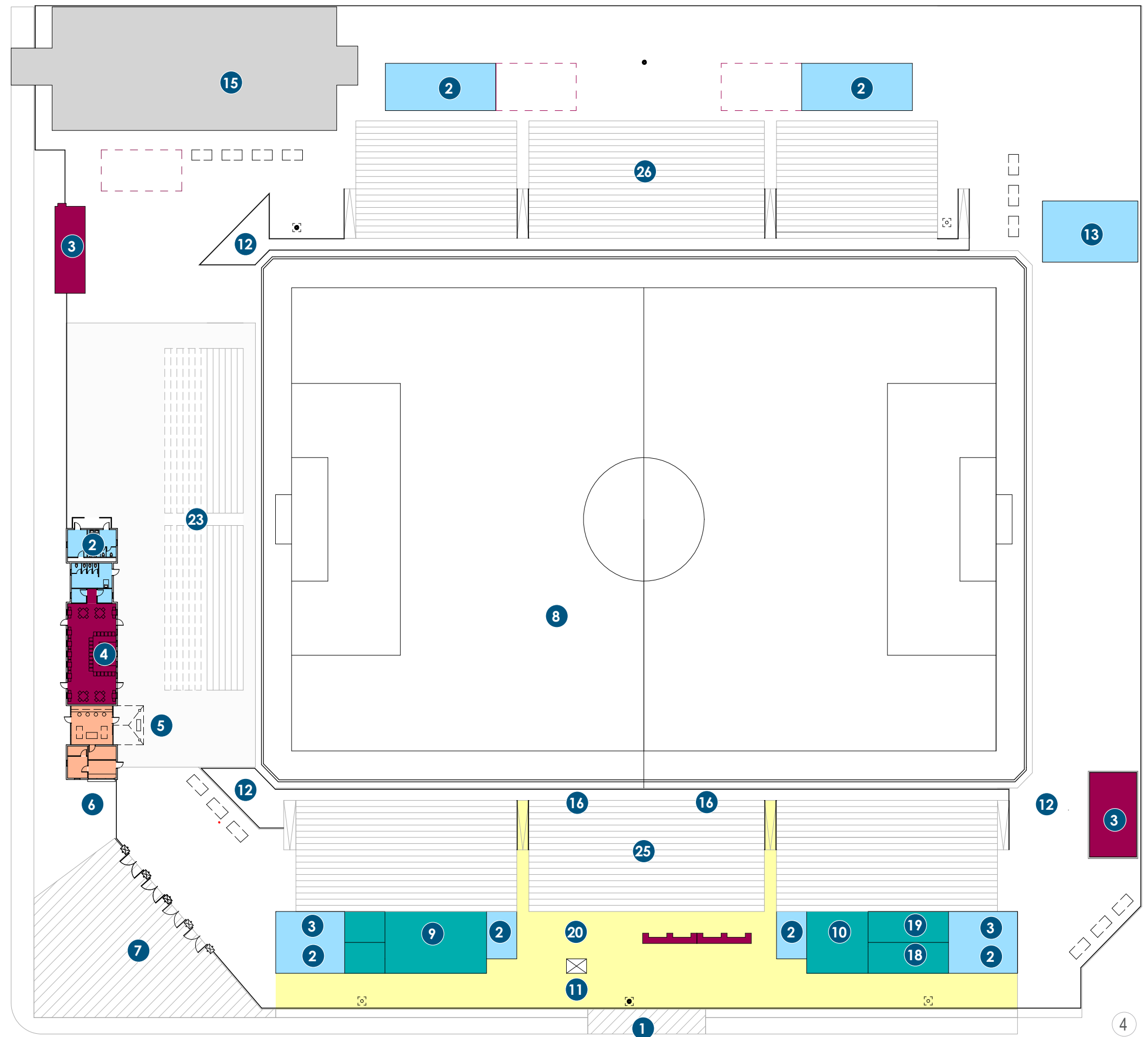
41,575 SF



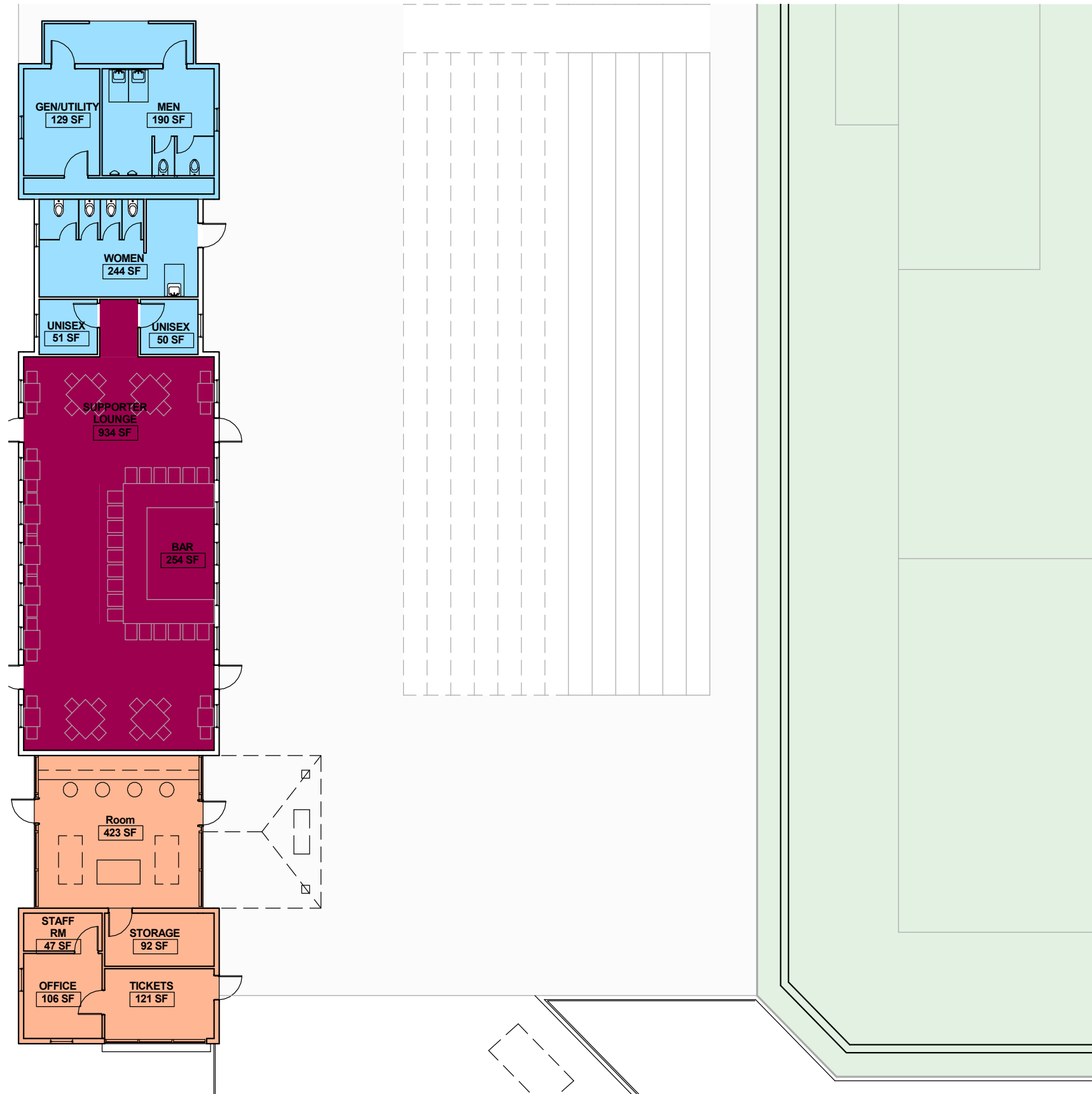
FIELD LEVEL PLAN - PHASE 1

LEGEND

1	New South Entrance	
2	Restrooms	7,164 SF
3	Concessions (Supplemented with Carts)	646 SF
4	Supporter - Bar/Lounge	2,099 SF
5	Team Store	1,221 SF
6	Ticketing	484 SF
7	Entrance Plaza	
8	Field (Pitch)	
9	Home Team Facilities / Locker Rooms	2,115 SF
10	Visiting Team Locker Rooms	915 SF
11	Circulation/Vertical Circulation	
12	Corner Kick Terrace	
13	Renovated Restrooms	1,896 SF
14	New Scoreboard	
15	Team Parking	17 Spaces
16	Team Benches	
17	Press	697 SF
18	Multi Purpose	600 SF
19	Officials	600 SF
20	Club and Lounge	4,300 SF
21	Owners Suite	697 SF
22	Cabanas	1,840 SF
23	North End Seating	500 Seats - 21" Chairs
24	New East Seating	2,500 Seats - 20" Chairs
25	New West Seating	3,000 Seats
Total Proposed Project		41,575 SF
Total Phase 1 Seating		6,000 Seats
Total Phase 2 Seating		4,000 Seats
Total Seating		10,000 Seats



BUILDING 1 - ENLARGED PLAN



CLUB LEVEL PLAN - PHASE 1

LEGEND

1	New South Entrance	
2	Restrooms	4,089 SF
3	Concessions	4,189 SF
4	Supporter - Bar/Lounge	2,099 SF
5	Team Store	638 SF
6	Ticketing	484 SF
7	Entrance Plaza	
8	Field	
9	Home Team Facilities / Locker Rooms	1,562 SF
10	Visiting Team Locker Rooms	1,200 SF
11	Circulation/Vertical Circulation	6,264SF
12	Corner Kick Terrace	2,714 SF
13	Renovated Restrooms	2,224 SF
14	New Scoreboard	
15	Team Parking	17 Spaces
16	Team Benches	
17	Press	700 SF
18	Multi Purpose	480 SF
19	Officials	480 SF
20	Club and Lounge	4,300 SF
21	Owners Suite	698 SF
22	Cabanas	1,109 SF
23	North End Seating	500 Seats - 21" Chairs
24	New East Seating	2,500 Seats - 20" Chairs
25	New West Seating	3,000 Seats
26	Total Proposed Project	42,756 SF
27	Total Phase 1 Seating	6,000 Seats
	Total Phase 2 Seating	4,000 Seats
	Total Seating	10,000 Seats

